

FEMA Damage Matrix: Minor (For Conventionally Built Homes)

Definition:

Encompasses a wide range of damage that does not affect the structural integrity of the residence.

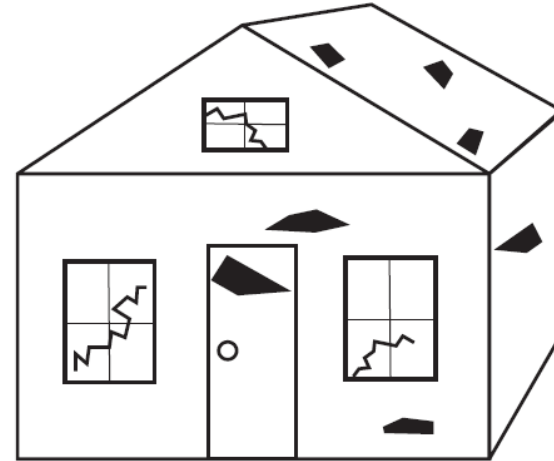
Flood Examples:

- Water line up to 18 inches in an essential living space
- Damage to mechanical components (e.g. furnace, boiler, water heater, HVAC, etc.)

Non-Flood Examples:

- Non-structural damage to roof components over essential living space to include shingles (e.g. roof covering, fascia board, soffit, flashing, and skylight)
- Non-structural damage to the interior wall components to include drywall, insulation
- Non-structural damage to exterior components
- Multiple small vertical cracks in the foundation
- Damage to chimney to include, tilting, fallen, cracks, or separated from the residence
- Damage to mechanical components (e.g. furnace, boiler, water heater, HVAC, etc.)
- Damage or disaster related contamination to a private well or septic system

NON-FLOOD DAMAGE: CONVENTIONALLY BUILT HOMES



EXAMPLES:

- Non-structural damage to roof components over essential living space to include shingles (e.g. roof covering, fascia board, soffit, flashing, and skylight)
- Non-structural damage to interior wall components to include drywall and insulation
- Non-structural damage to exterior components
- Multiple small vertical cracks in foundation
- Damage to chimney to include tilting, fallen, cracks, or separated from the residence
- Damage to mechanical components (e.g. furnace, boiler, water heater, HVAC, etc.)
- Damage or disaster related contamination to a private well or septic system

MINOR - NON-FLOOD